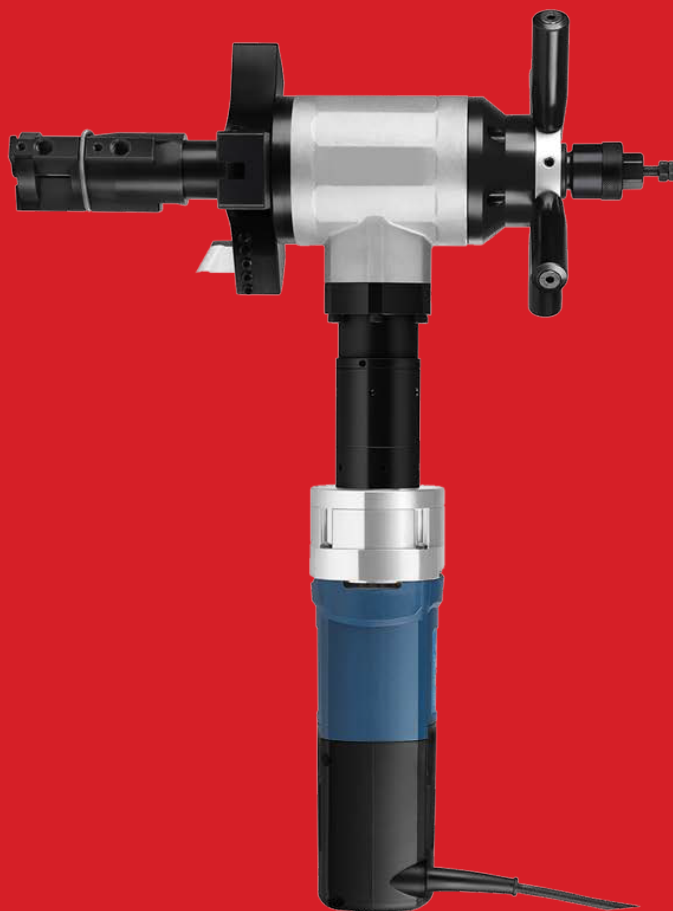


EZLINK PORTABLE MACHINE TOOLS



PB6
PIPE
Beveling
Prep
SOLUTIONS

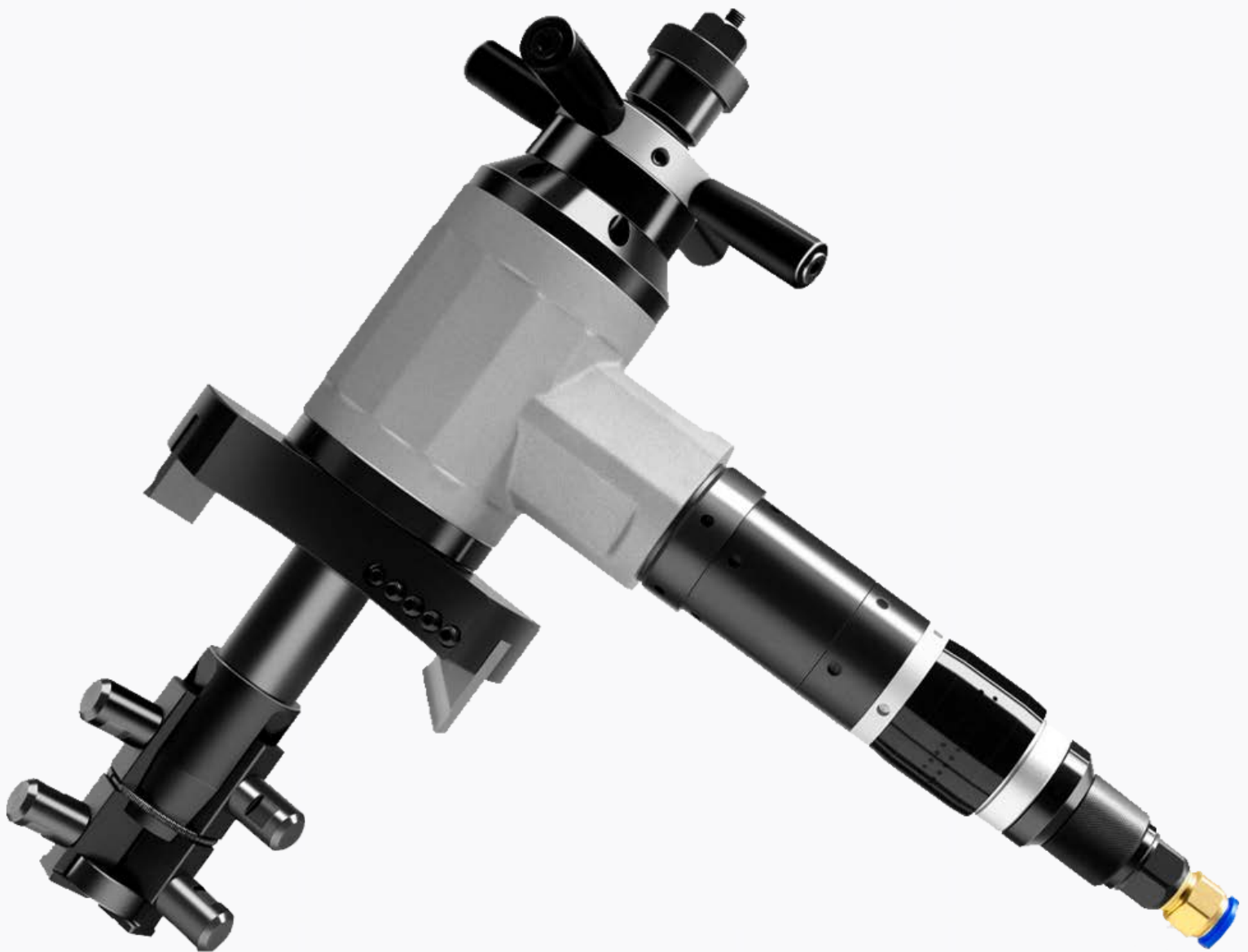


EZLINK PORTABLE MACHINE TOOLS

Add: Xinxiang Town Industry Zone, Huanghe Road, Weibin District, Xinxiang City, Henan, China
Tel: +86-17737350726 · E-mail: info@elineboringmachine.com · www.elineboringmachine.com



PRODUCT CATALOGUE

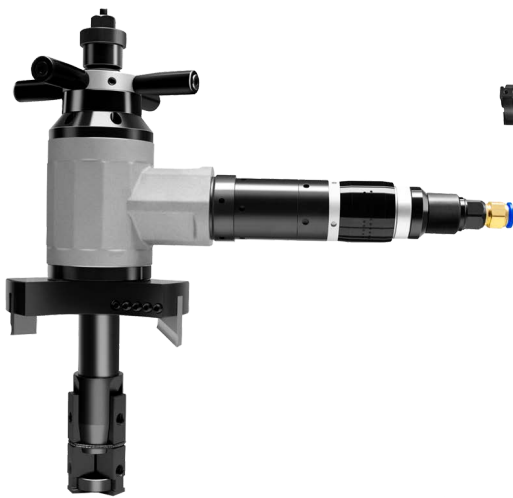




PB6 BEVELING MACHINE



The portable PB6 Pipe Beveling Machine is designed to machine pipe prep on-site. The PB6 is capable perform weld preparation of tube ends, branches and headers. PB6 is be equipped with a compressed air motor /electric motor that arranged in 90° to the sleeve.



PB6 Pneumatic



PB6 Chinese Motor



PB6 Bosch Motor

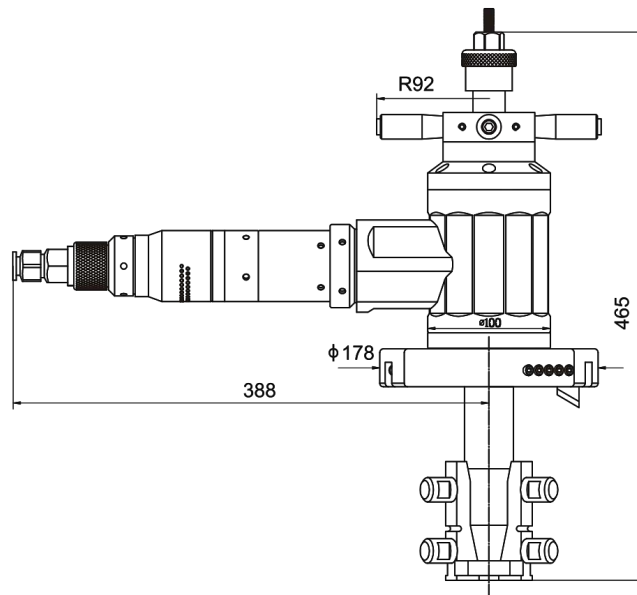
Feature

1. Light weight Aluminum housing, and machine components for easy transport and handling.
2. centering 3 leg wedge system centers the tool in the pipe for quick setup and accurate machining.
3. Integrated wedge system allows quick change of leg extensions.
4. High strength mandrel and large-area expanding block for rigid and smooth operation.
5. Ratchet wheel handle design makes tool feed easy, absorbs torque, reduces operator fatigue and increases safety.
6. Three motor options to choose from allowing you the flexibility to power the machine anywhere – pneumatic, Chinese electric motor, and German Bosch electric motor.
7. Variety of tooling options allow you to bevel, counter bore, and perform V and U welding seam with proper carbide tooling.
8. Three bevel tools can be installed on cutter, pipe can be worked synchronously.



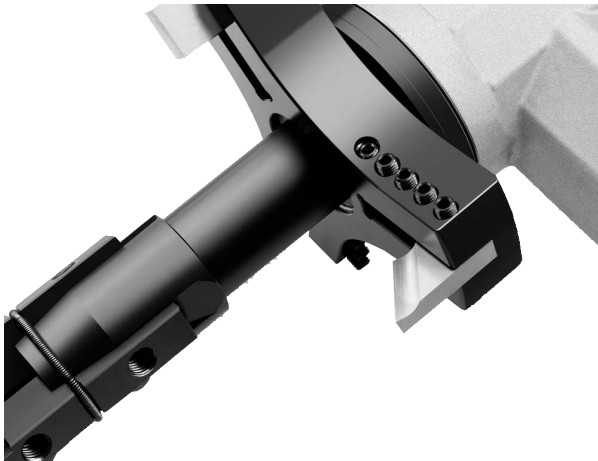
PB6 BEVELING MACHINE

Dimensions



Specifications

Model		PB6	
Driven	Pneumatic	Chinese Motor	Bosch Motor
Power Supply	900L/Min@0.6Mpa	220-240V 1PH 50/60HZ	
Motor Power	1 HP	1050W	1000W
Clamping Range(ID)	2.36"-6.26" (60-159mm)		
Working Range(ID-OD)	2.36"-6.63" (60-168.28mm)		
Wall Thickness	≤20mm (0.79")		
Rotation Speed	61r/min	36r/min	38r/min
Working Weight	16kg	17kg	
Shipping Weight	30kg	33kg	
Packing Size	26.8 x 21.7 x 10.24 In. (680x550x260mm)		
Tool Number	3		





CONTACT

EZLINK PORTABLE MACHINE TOOLS

Add: Xinxiang Town Industry Zone, Huanghe Road,
Weibin District, Xinxiang City, Henan, China

Tel: +86-17737350726

Email: info@ezlinktrade.com

info@ezlinkportable.com

info@elineboringmachine.com

www.ezlinktrade.com

www.ezlinkportable.com

www.elineboringmachine.com

ID Mount

PB6

Pipe Beveling

FOR

2.36" - 6.63"

DIAMETER PIPES



EZLINK PORTABLE MACHINE TOOLS

